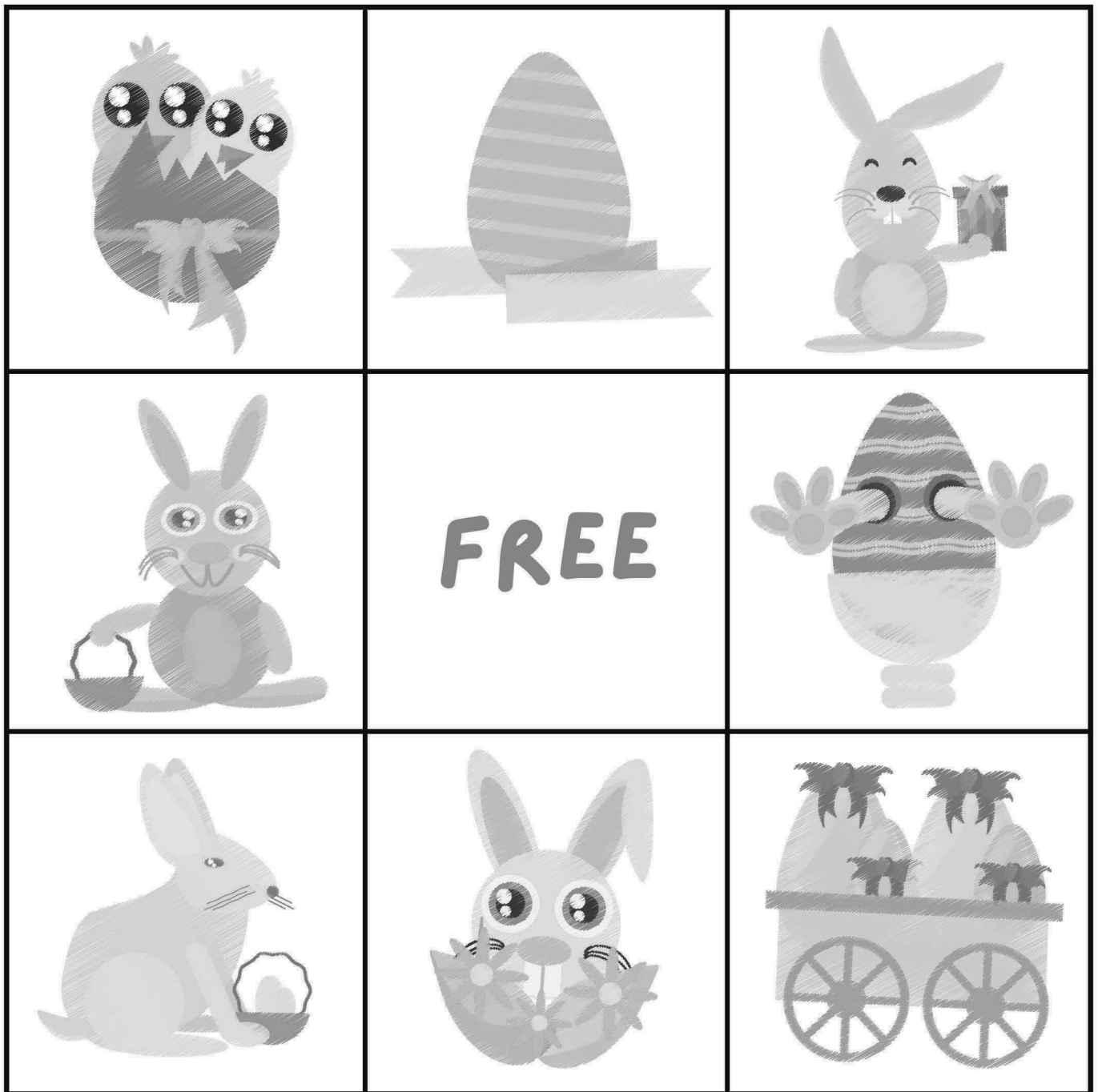
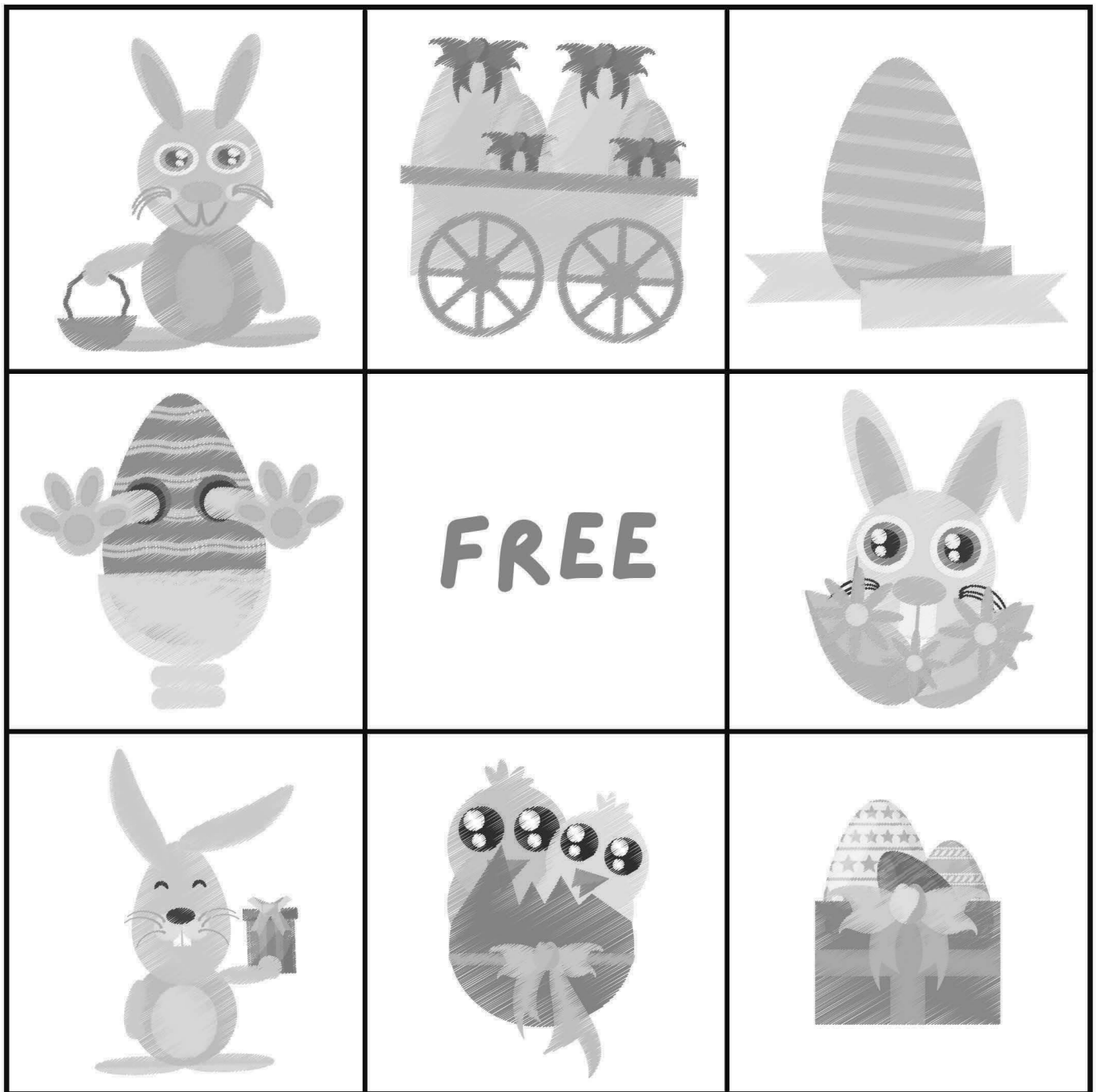


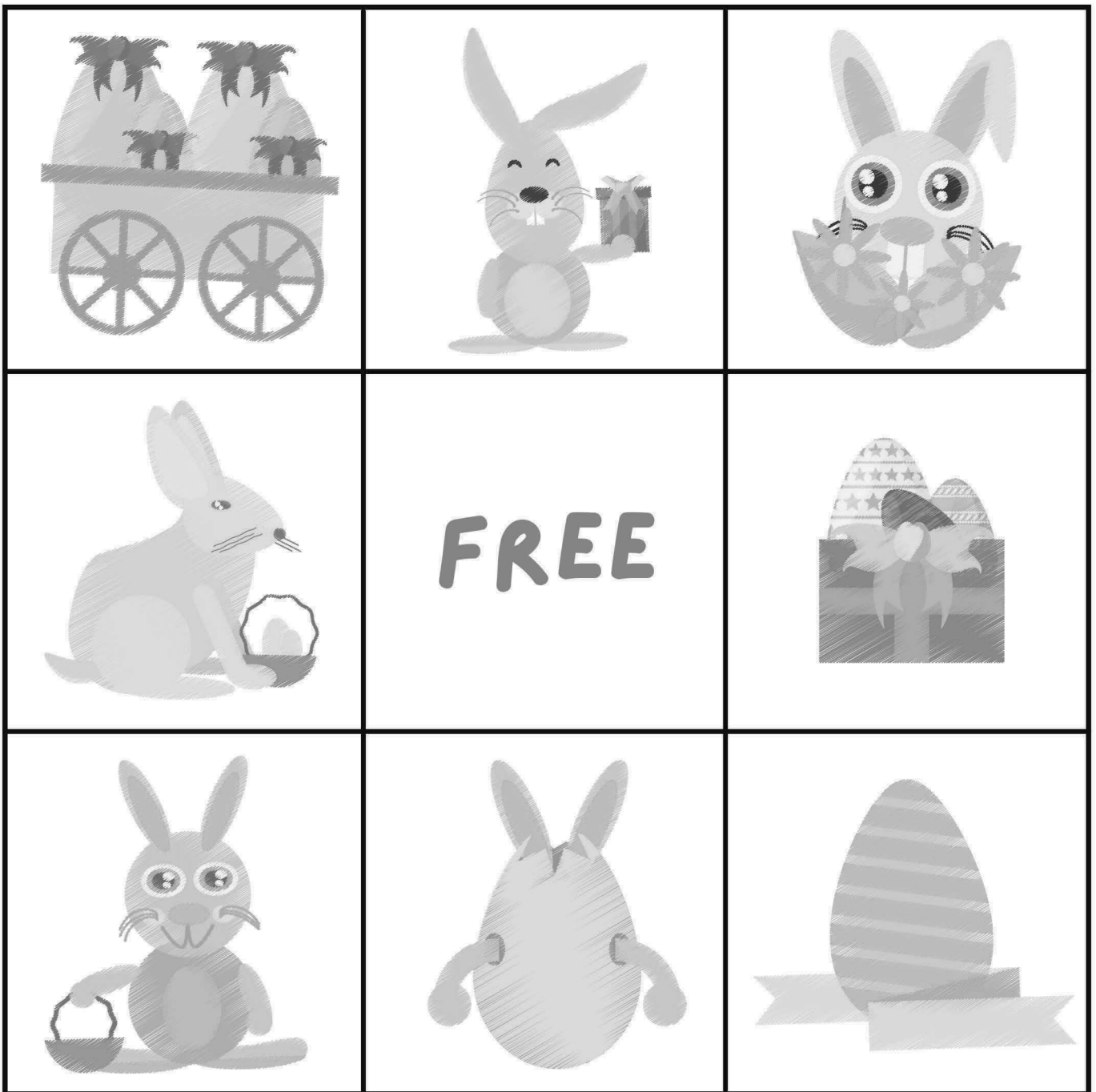
EASTER BINGO



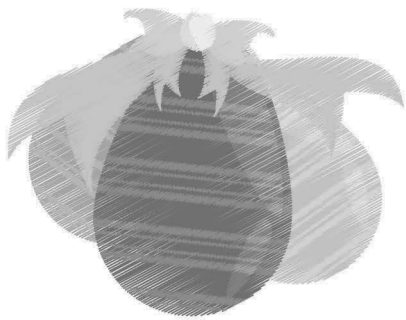
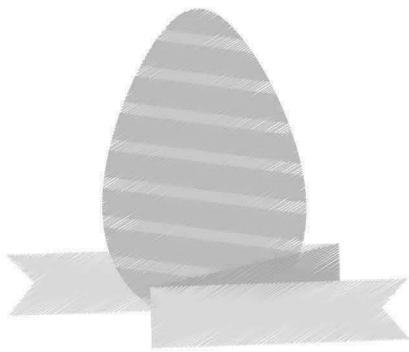
EASTER BINGO



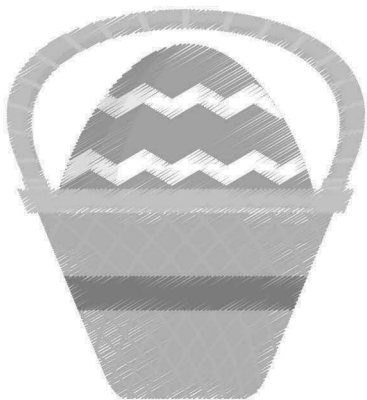
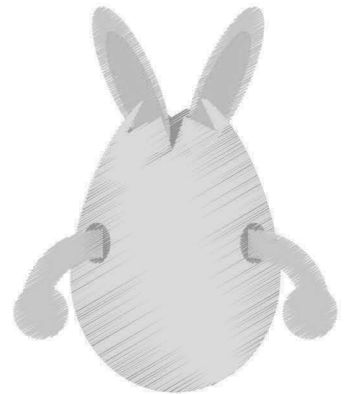
EASTER BINGO



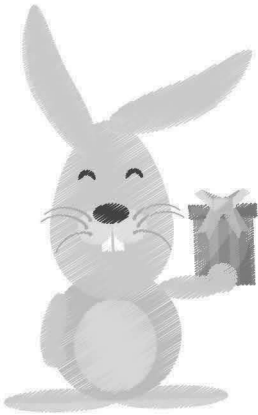
EASTER BINGO



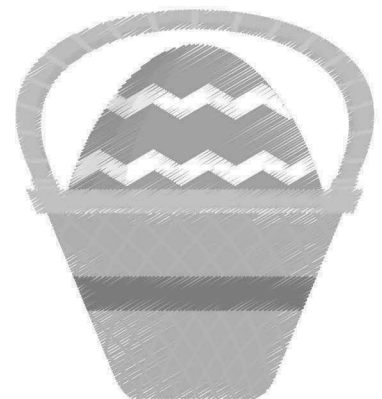
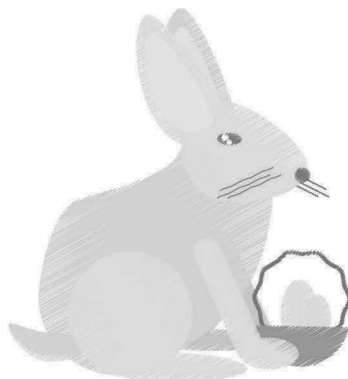
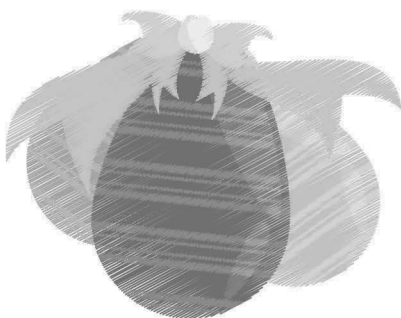
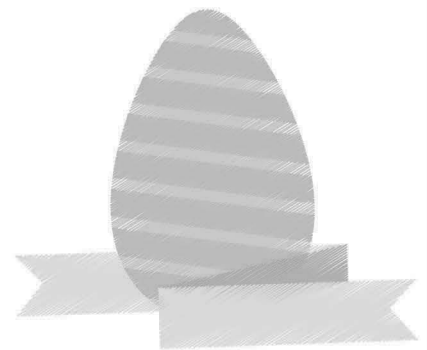
FREE



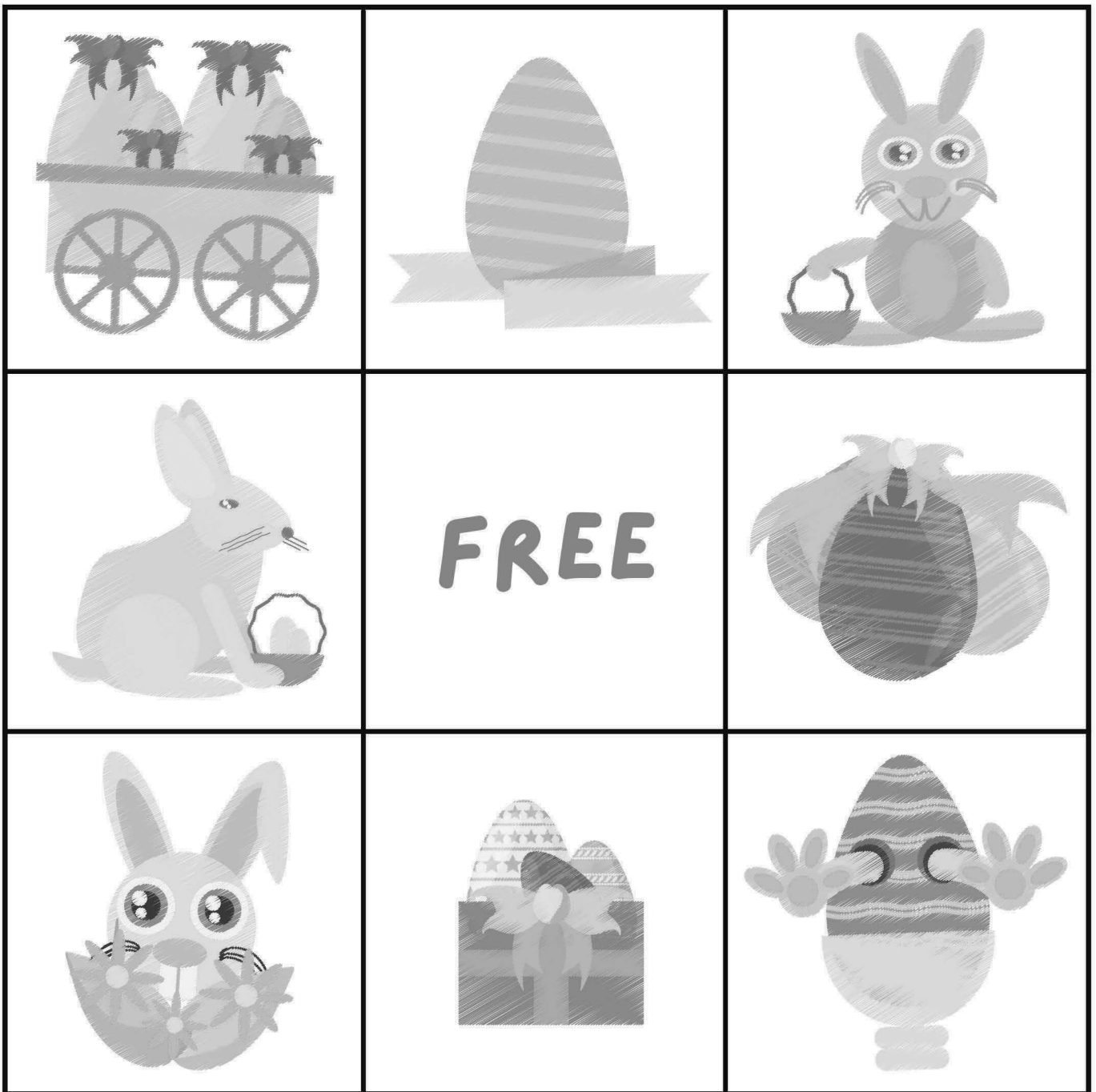
EASTER BINGO



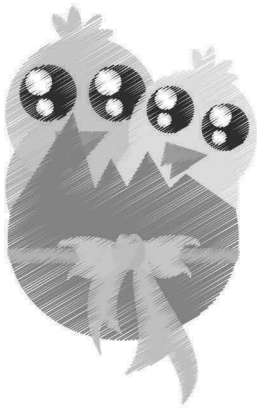
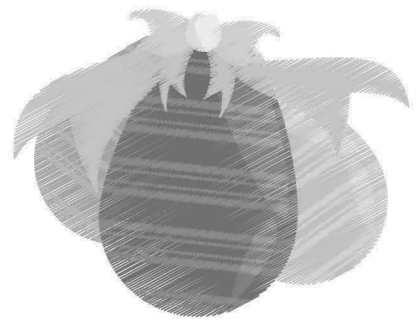
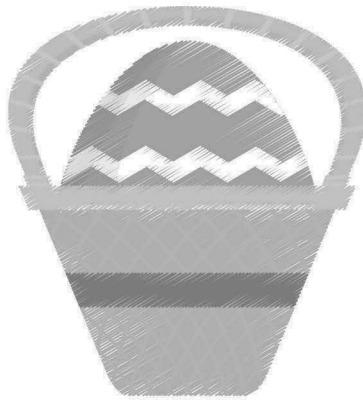
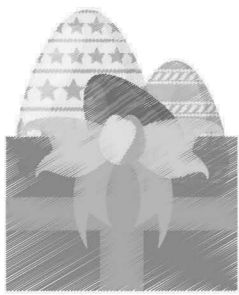
FREE



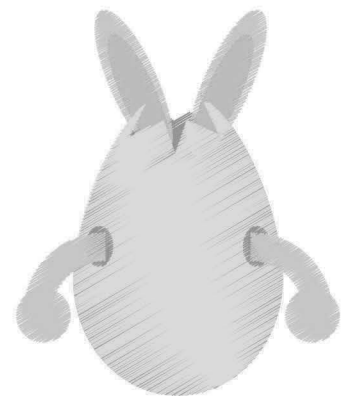
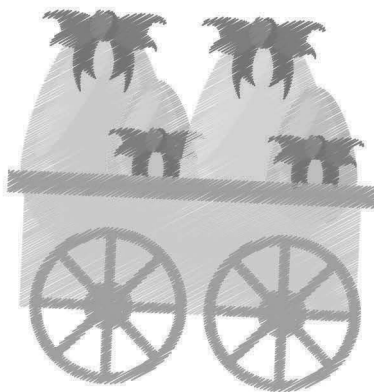
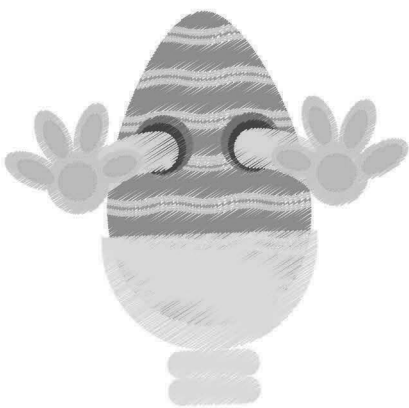
EASTER BINGO



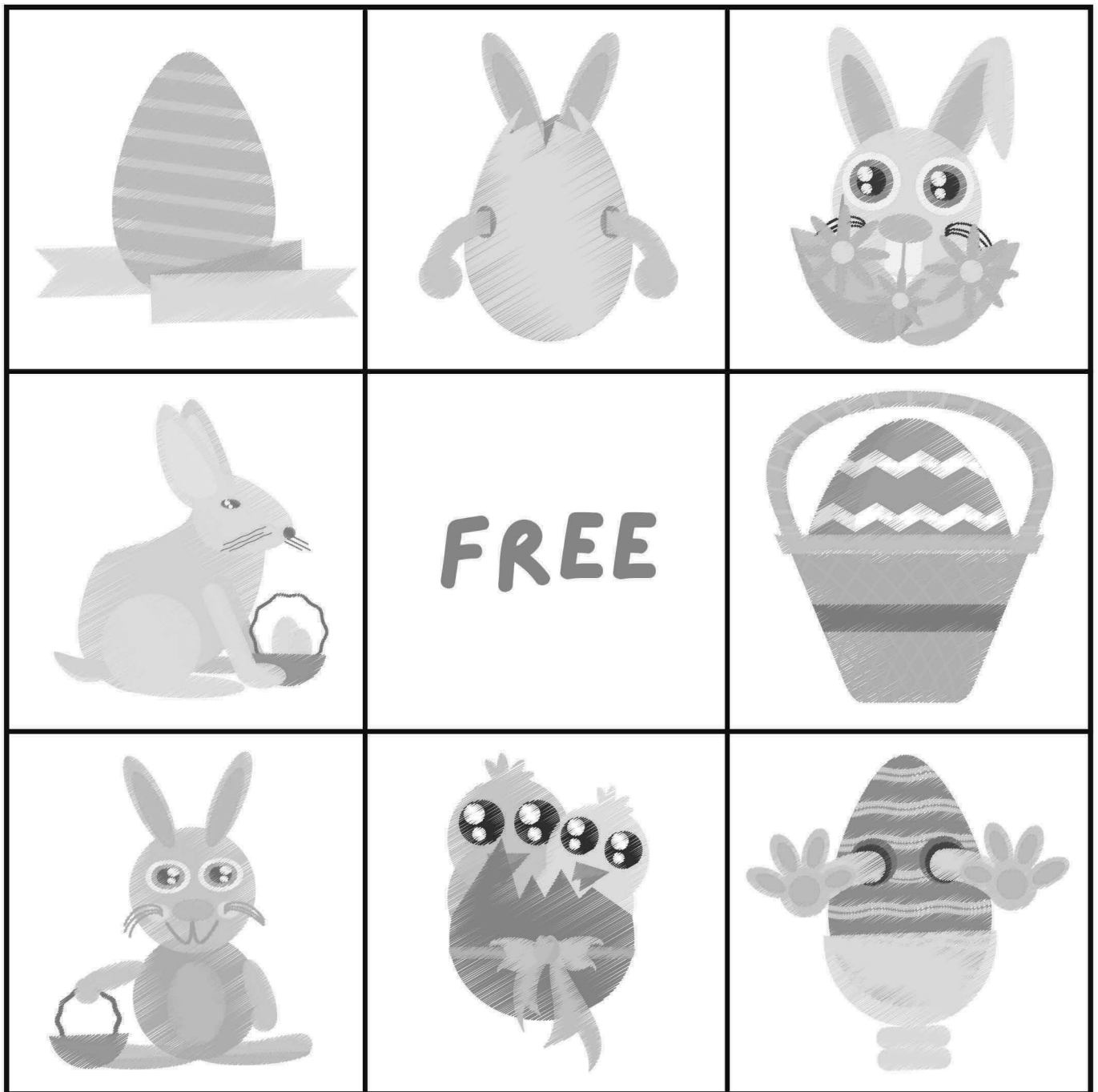
EASTER BINGO



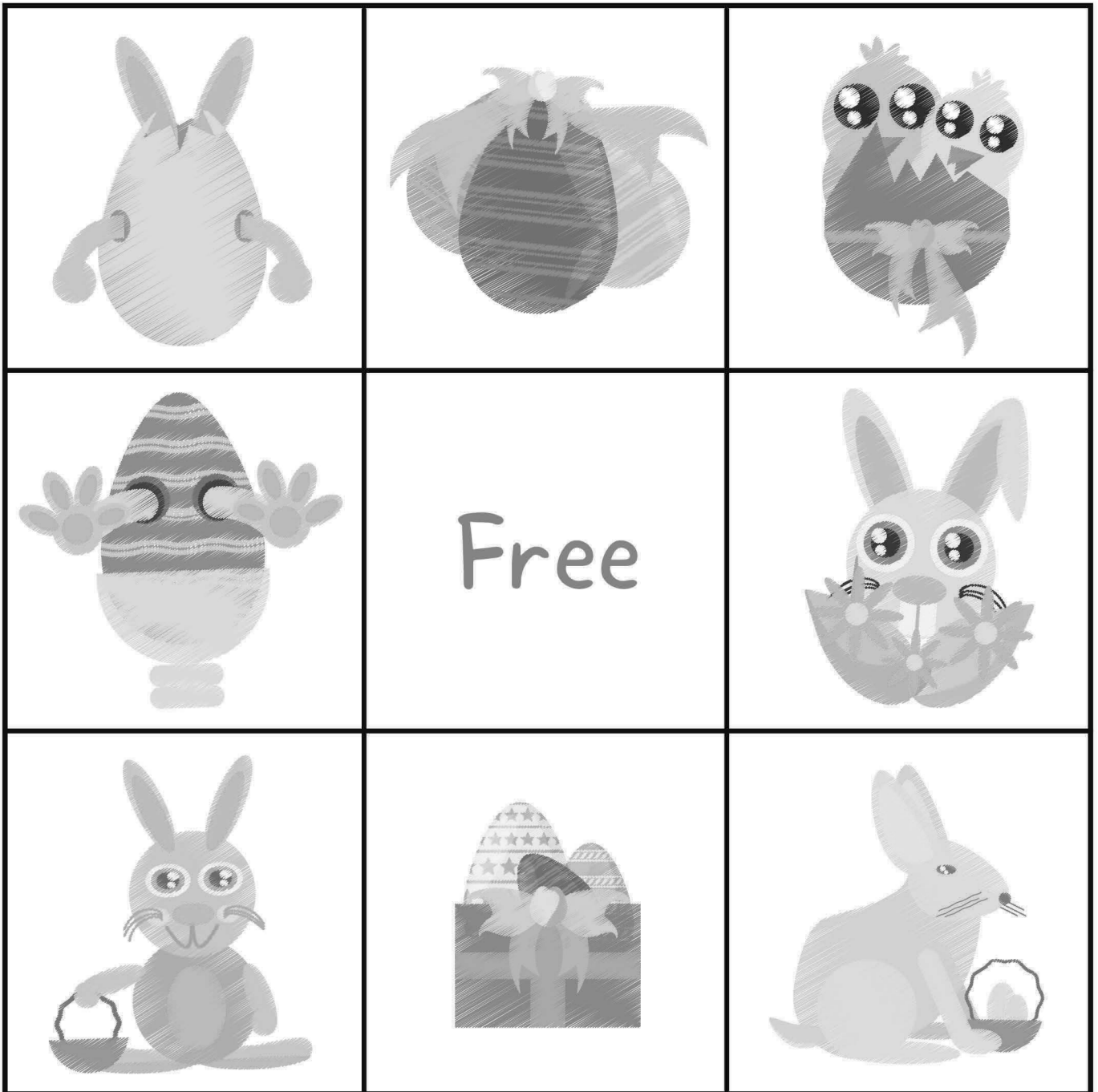
FREE

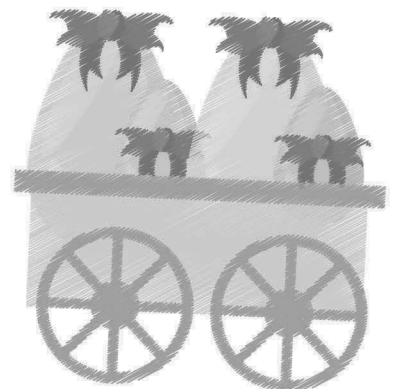
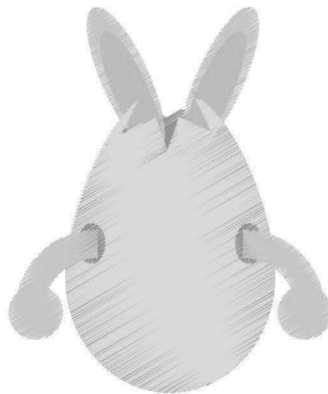
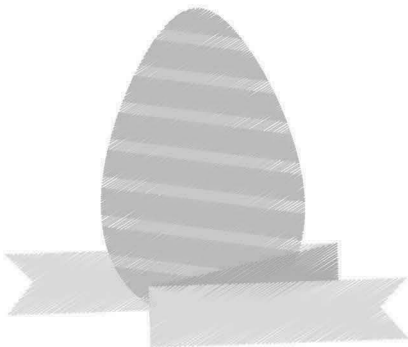
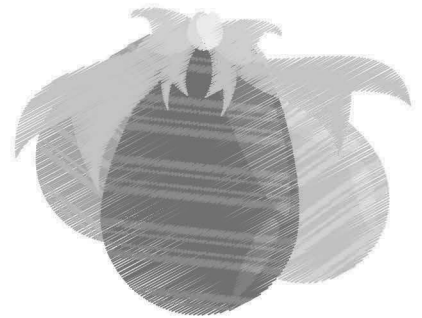
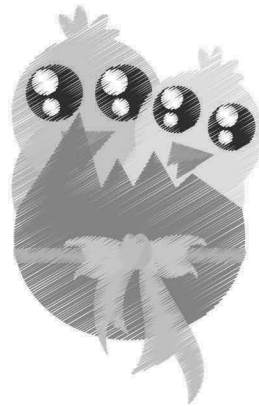
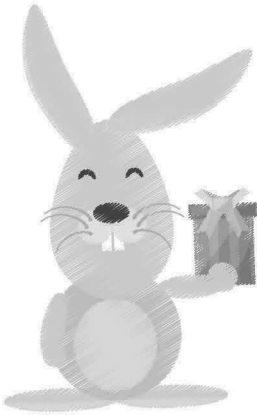
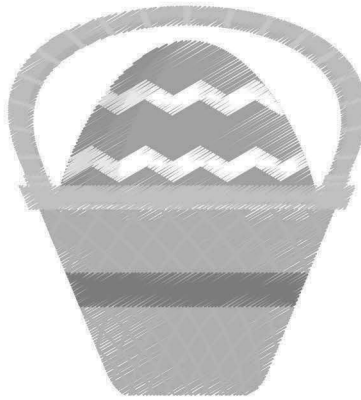
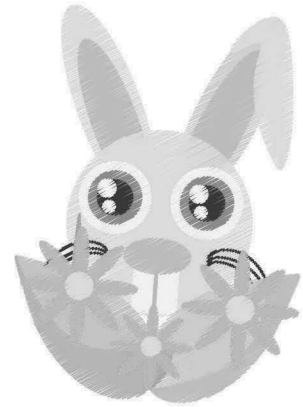
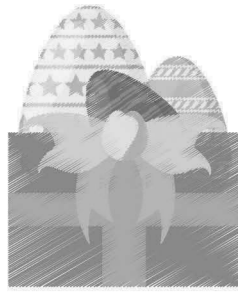


EASTER BINGO



EASTER BINGO





EASTER BINGO

INSTRUCTIONS

Cut out each item on the final grid and place them in a bag.

Give each player a bingo card.

Pull items randomly out of the bag, one at a time.

Players place a jelly bean on each square picked until a row is formed vertically, horizontally or diagonally.

Then exclaim BINGO and win!